

WINNER  
EUROPEAN DESIGN  
AWARD 2008  
*'A truly 21st century magazine'*  
\*EDWARDS  
magazine

ANOTHER  
ARCHITECTURE



# MARK

**MARK #15**  
AUGUST / SEPTEMBER 2008

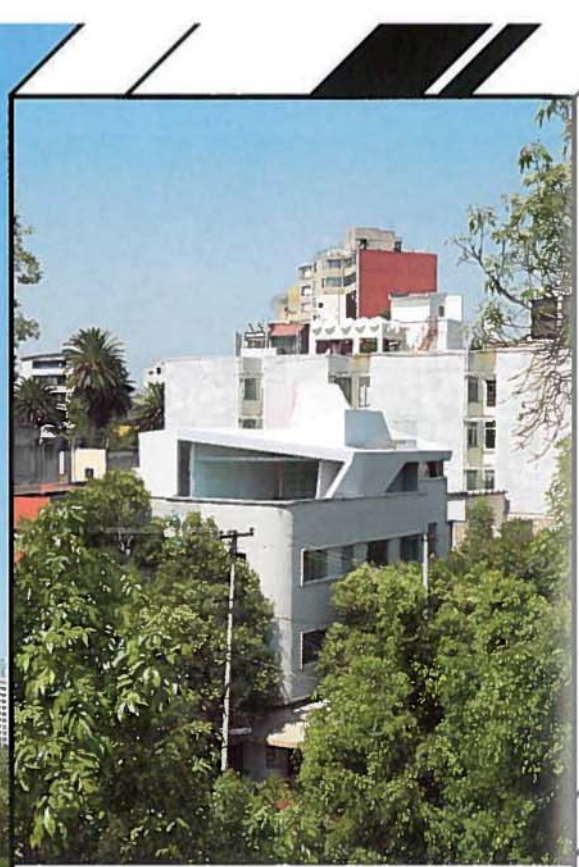
EUROPE €19.95 / UK £ 14  
JAPAN ¥ 3,570 / KOREA 40,000WON  
CANADA \$ 29.50 / USA \$ 24.95

BY THE MAKERS OF  
FRAME

## COMPOSITION IN MAJOR

**THE NOISIEST  
HOUSE  
IN MADRID**

**PLUS: READING,  
SHOPPING AND  
LEARNING IN  
LATIN AMERICA**

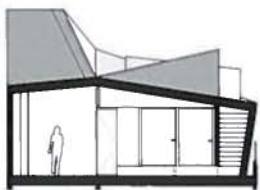


**OZULUAMA**  
2008  
LA CONDESA,  
MEXICO CITY

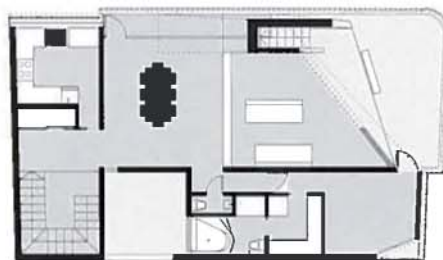
AT103 WITH ARCHITECTS COLLECTIVE

PHOTOS WOLFGANG THALER

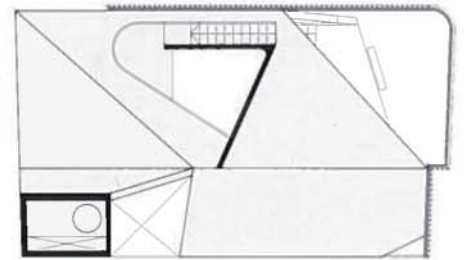
Ozuluama is a new structure set on top of an old apartment building. The new structure resembles a nomad shelter and is made out of large sheets of Corian. The roof is treated as a continuous surface, deformed according to an analysis of the existent building structure and internal circulations. The terrace works as a space in-between the city and the house and is accessible from all rooms.



CROSS SECTION.



PLAN.



ROOF.